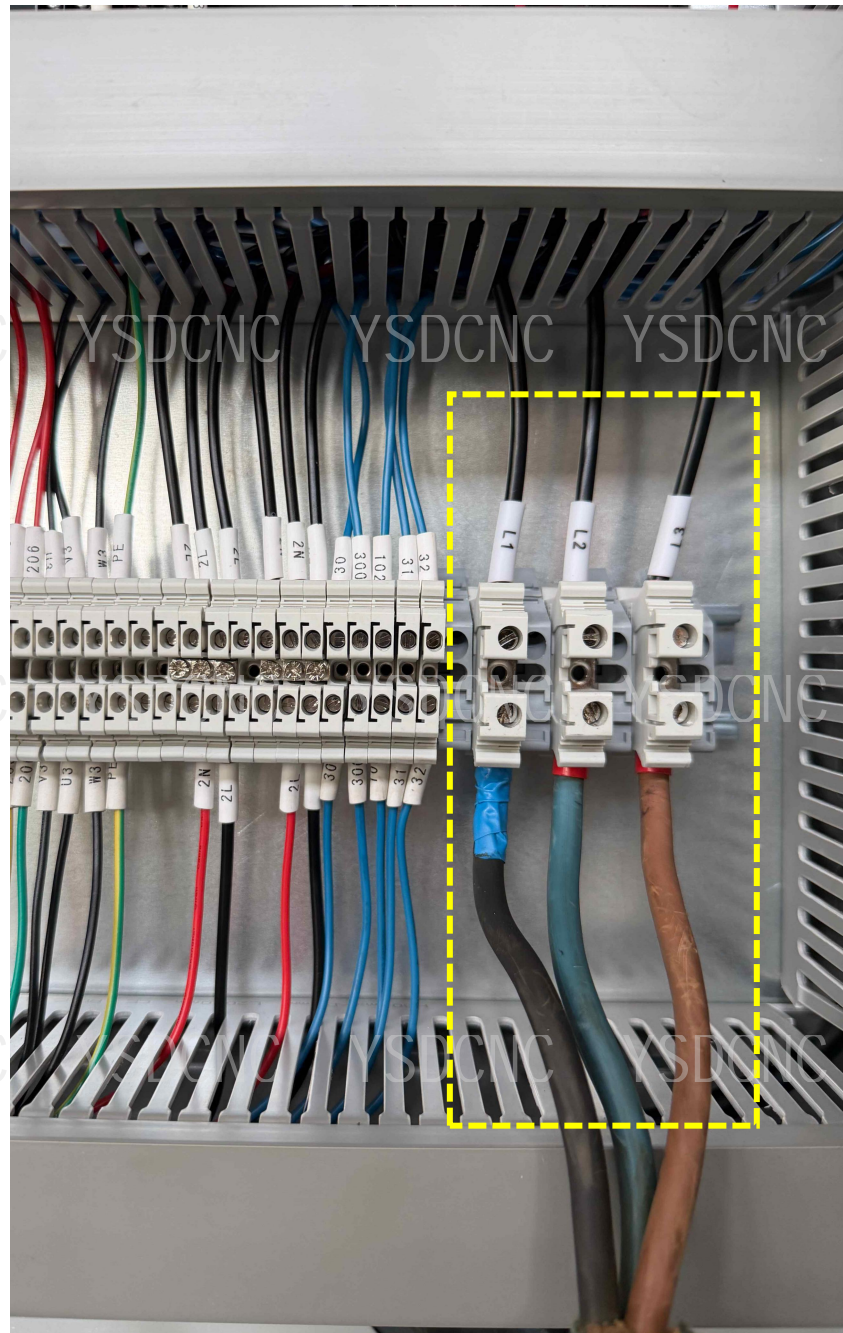


因为机器在运输途中是不允许有液压油，所以需要客户自己准备。

请准备46号抗磨液压油，加入油缸，机器才能启动  
(加油至油缸的三分之二的的位置即可)

Because hydraulic oil is not allowed during machine transportation, the customer needs to prepare it themselves. Please prepare No. 46 anti-wear hydraulic oil and add it to the cylinder for the machine to start. (Fill the tank to two-thirds full.)

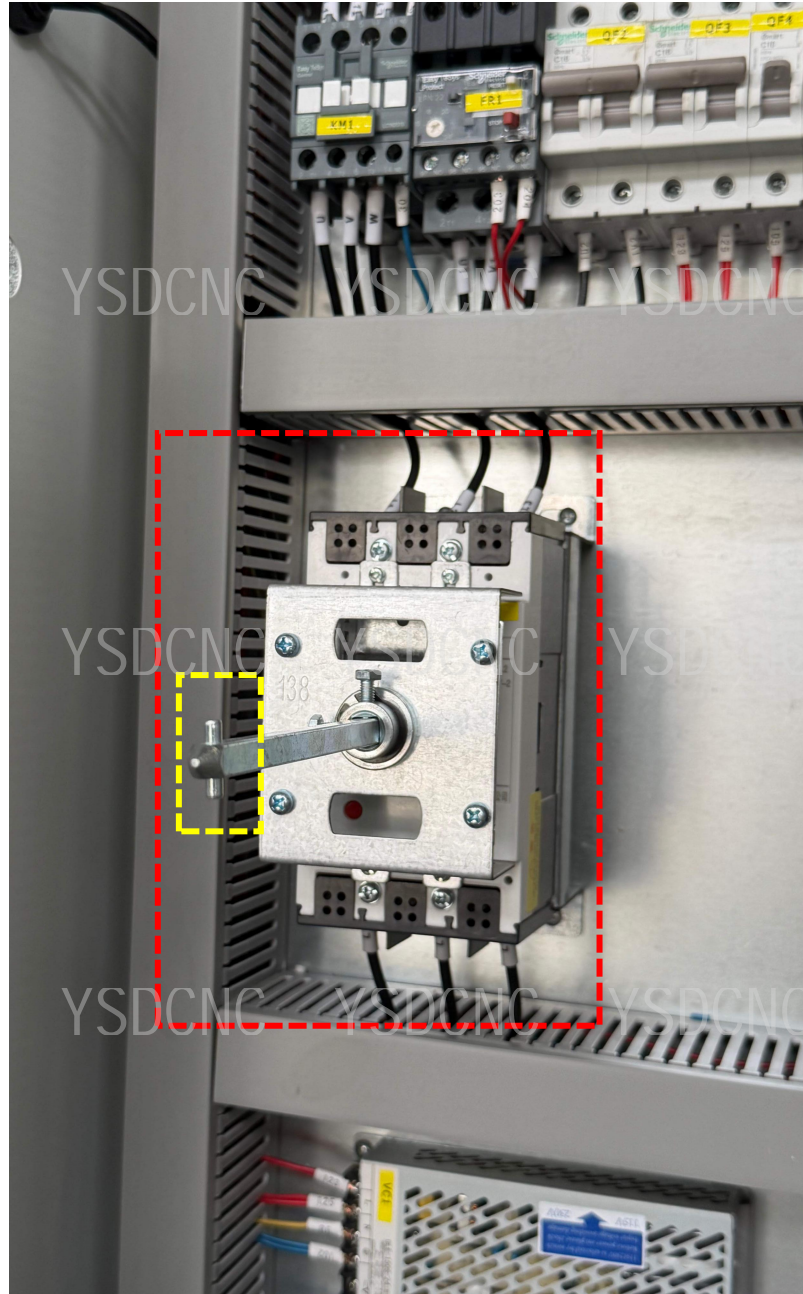
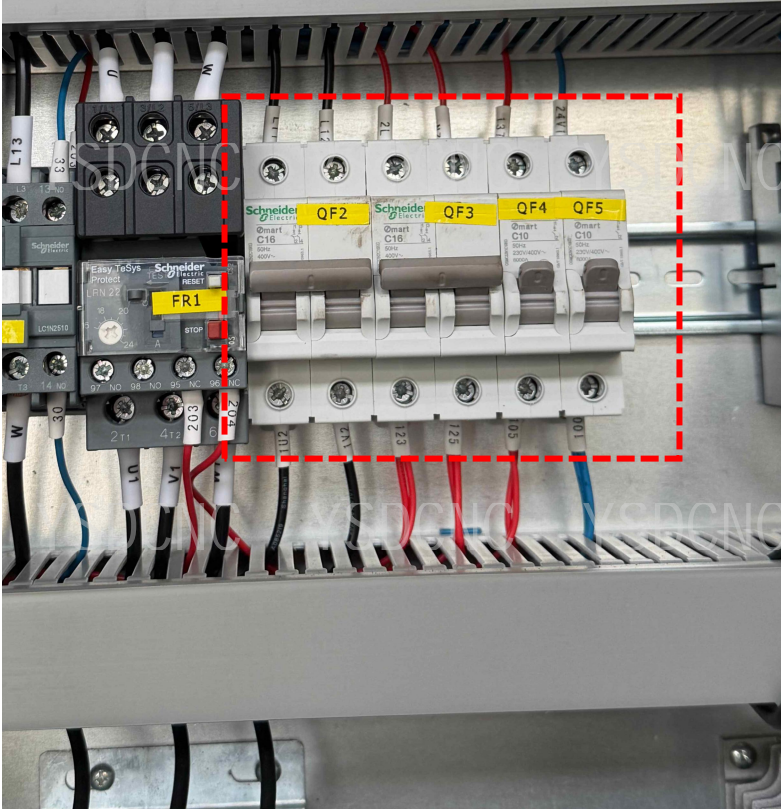
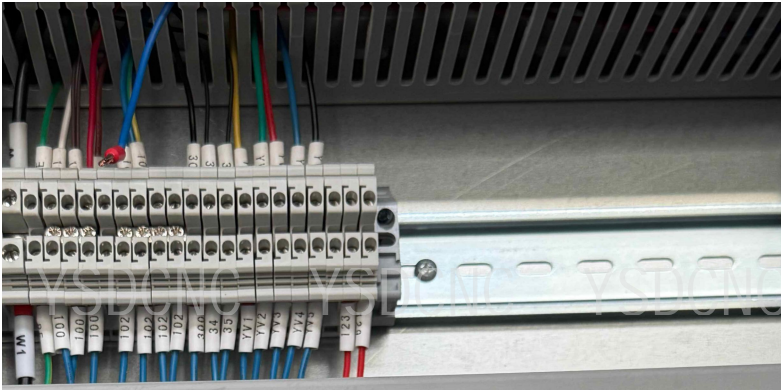




打开电控箱，接入三根电源线  
Open the electrical control box  
and connect the three power  
cables.



接入脚踏开关  
Connect to foot switch



左图向上打开电控箱开关  
右图红色框圈出的向右旋打开电  
源开关

The left image shows the control  
box switch turned upwards.  
The right image, circled in red,  
shows the power switch turned  
clockwise.



打开电源开关后系统自动开机亮起，  
打开急停开关

The system automatically powers on and lights up after  
the power switch is turned on.

Activate the emergency stop switch.

# 长按3秒油泵启动

Press and hold for 3 seconds to start the oil pump.





查看电机正转反转  
顺着箭头标识转动即为正转，  
反之则为反转，假如此时电机反转，  
需要关闭电源，将接入的三根线，  
调换其中任意两根的位置即可

To check if the motor is rotating forward or backward,  
follow the arrow markings for forward rotation, and  
vice versa. If the motor is rotating in reverse, turn off  
the power and swap the positions of any two of the  
three connected wires.