

因为机器在运输途中是不允许有液压油，所以需要客户自己准备。

请准备46号抗磨液压油，加入油缸，机器才能启动
(加油至油缸的三分之二的的位置即可)

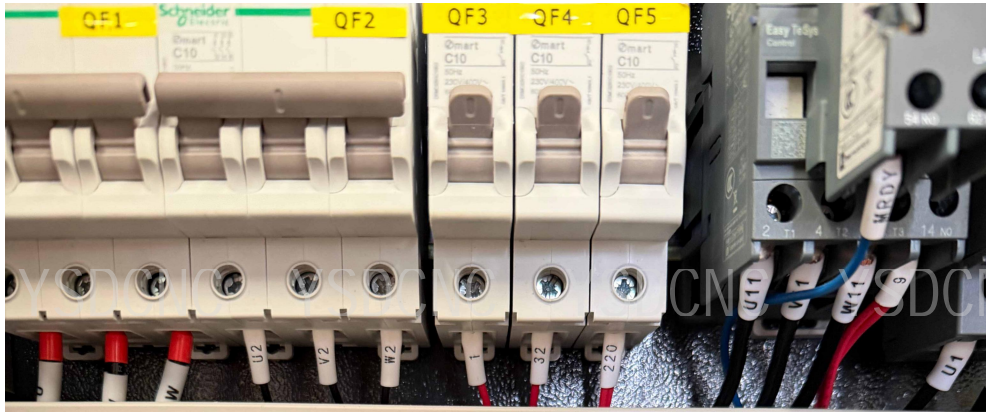
Because hydraulic oil is not allowed during machine transportation, the customer needs to prepare it themselves. Please prepare No. 46 anti-wear hydraulic oil and add it to the cylinder for the machine to start. (Fill the tank to two-thirds full.)



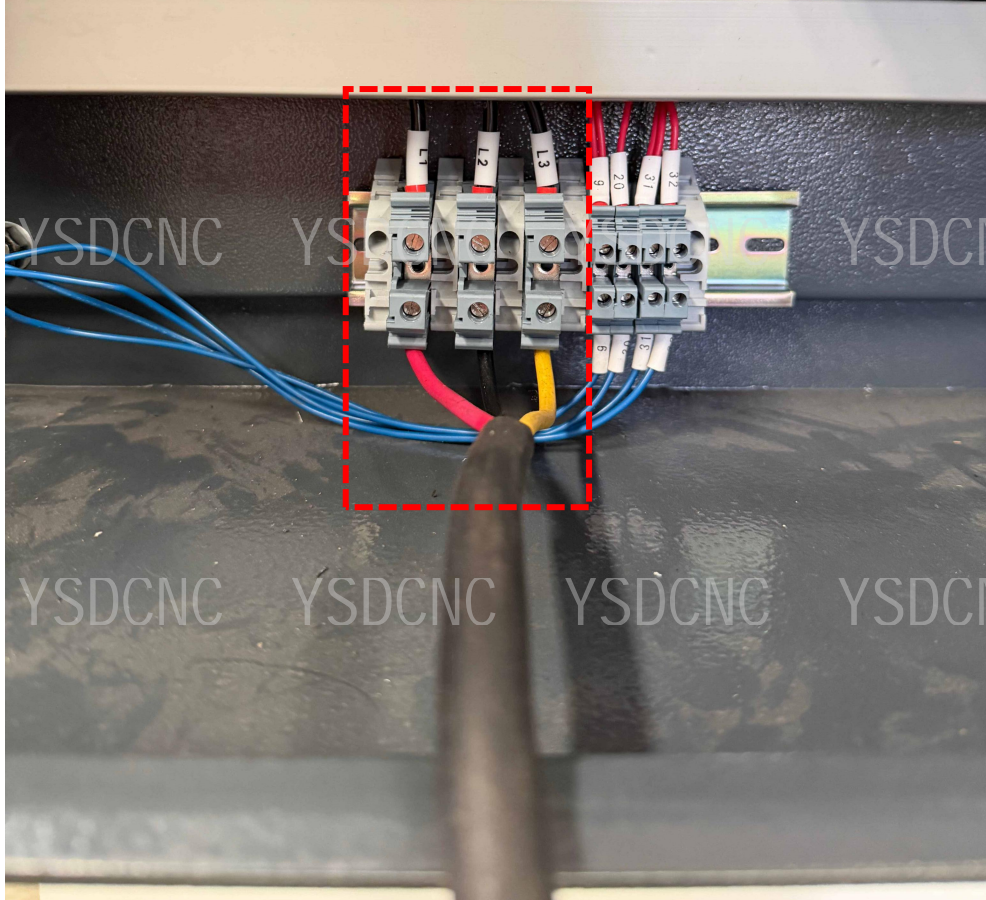


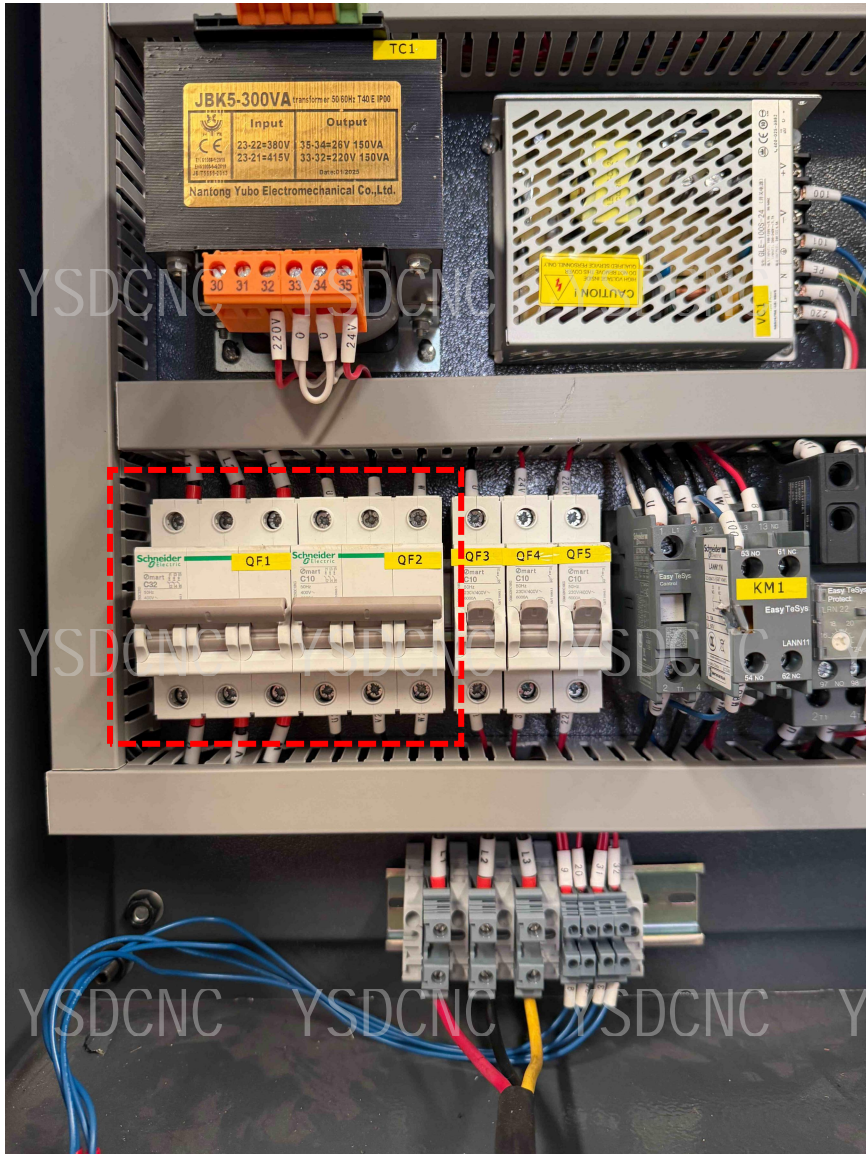
左图为加油口，
右图为油压显示器

The left image shows the filler neck, and the right image shows the hydraulic pressure indicator.



接入三根线
Connect three wires





打开电源开关
Turn on the power switch



打开系统电源开关 (0 to 1) , 白色指示灯亮起。
Turn on the system power switch (0 to 1), and the white indicator light will illuminate.



向右旋转，打开红色急停开关
Turn right to activate the red emergency stop switch.

向右旋转，打开脚踏开关上的红色急停开关
Turn the red emergency stop switch on the foot pedal to the right to open.





按下绿色油泵按键启动，机器开始运行

Press the green oil pump button to start, and the machine will begin running.



根据电机上的箭头符号观察，
电机是否正转，顺着箭头方向转动即为正转；
反之则为反转，假如是反转，需要关闭电源，
将接入的三根线，调换其中任意两根的位置即可

Observe the arrow symbol on the motor to see if it is rotating in the correct direction. If it rotates in the direction of the arrow, it is rotating in the correct direction; otherwise, it is rotating in the wrong direction. If it is rotating in the wrong direction, turn off the power and swap the positions of any two of the three connected wires.



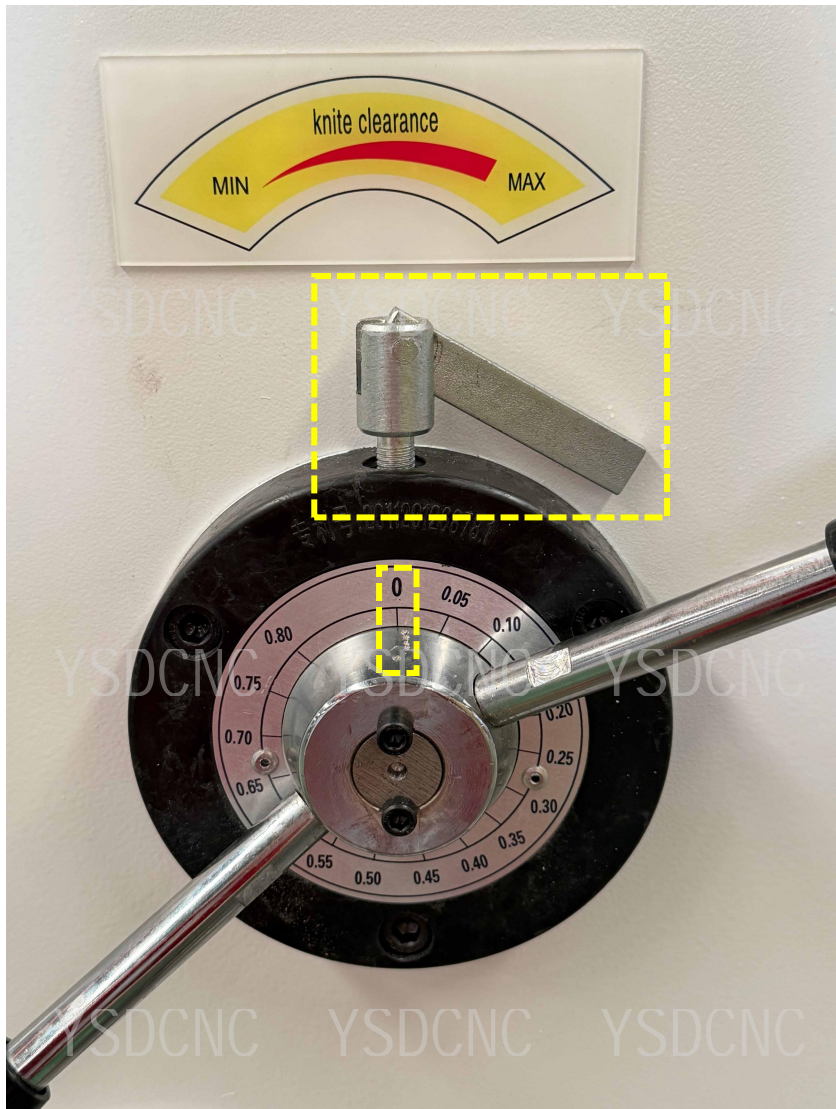
例如：要剪切的长度为400mm，
那么我们在XP的位置：输入“400”，
按下回车确定

For example: If you want to cut a length of 400mm,
then in the XP field: type "400",
and press Enter to confirm.



再按下绿色的启动键，
后挡料退让到400mm的位置，机器上放
入要剪切的板材，踩下脚踏开关开始剪
切

Press the green start button again, the back
gauge will retract to 400mm, place the
sheet material to be cut onto the machine,
and press the foot pedal to start cutting.



售后问题之调节刀口间隙

当刀片间隙不合理时，我们需要调节刀口间隙

先将图中所圈的锁紧打开（如左图所示）
转动把手，旋至所需的刀口间隙位置
例如：板材为2mm，那么刀口间隙调至“0.20”的位置

调节完成后，锁紧刀口间隙（如右图所示）

After-sales issue: Adjusting the blade gap

When the blade gap is unreasonable, we need to adjust it.

First, loosen the locking mechanism circled in the diagram (as shown in the left image).
Turn the handle to the desired blade gap position.

For example: If the material thickness is 2mm, adjust the blade gap to the "0.20" position.
After adjustment, tighten the blade gap (as shown in the right image).

刀口间隙的调节数据，请根据下图的对照表

Please refer to the table below for the adjustment data of the cutting edge gap.

